

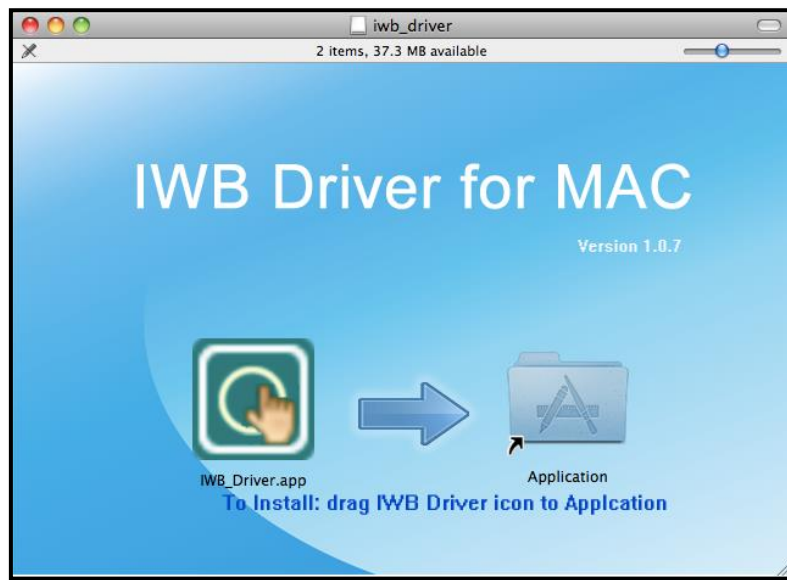
IWB Driver & Software

Quick User Guide

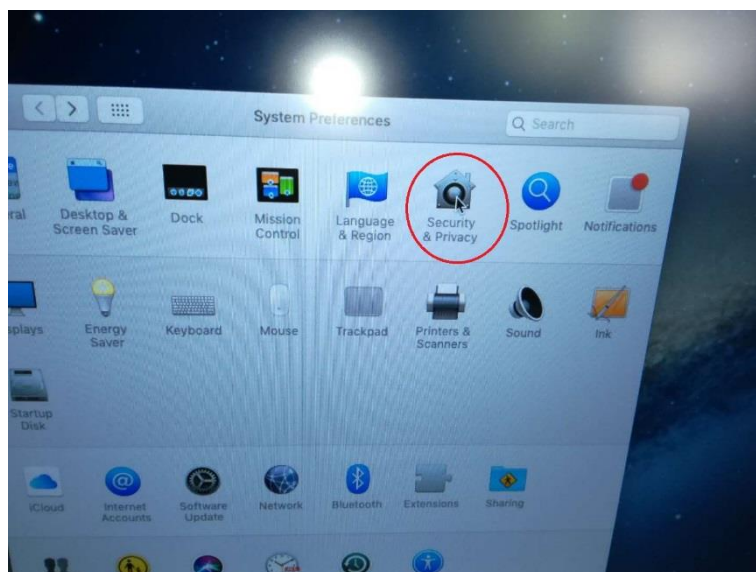
(MAC version)

Installation of the MAC version:

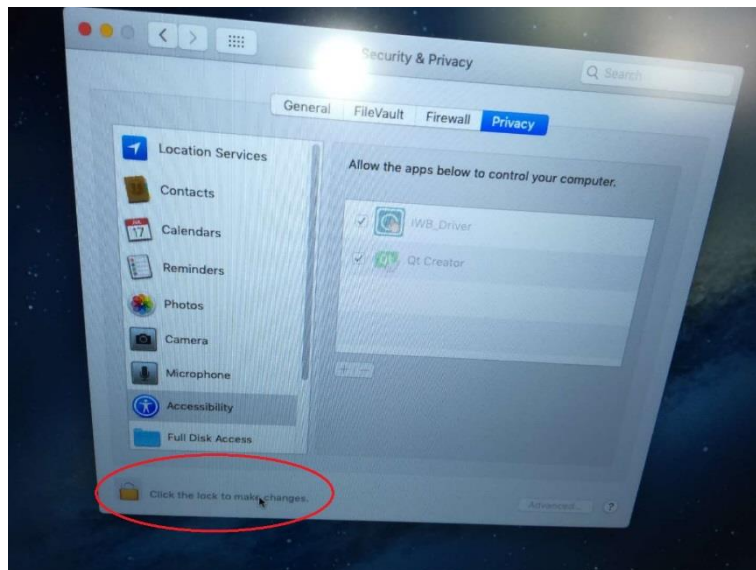
1. Double click on the IWB_DRIVER.dmg file, a window will pop up. Follow the instruction on the screen, use mouse dragging the icon into the application.



2. After dragging the file in application, please find the driver in the application folder.
3. Go to setting, "Security and privacy"



4. Go to the privacy tab and accessibility row, click on “click the lock to make changes” and check the IWB_Driver.



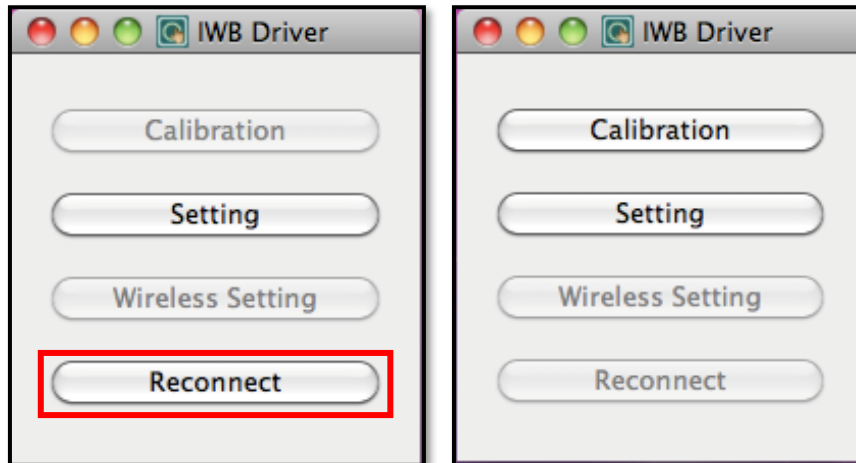
5. Installation Complete.

MAC OS Configuration

Run driver and connect USB version.

Step 1: Double click  to run IWB driver.

Step 2: Click Reconnect to connect the IWB.



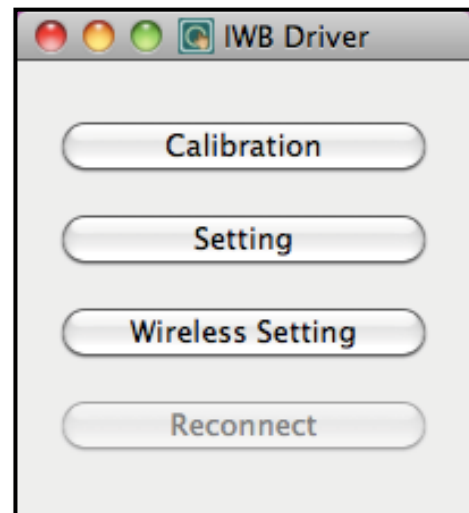
Connecting Wireless Version

Step 1: Plug in Wireless receiver to PC

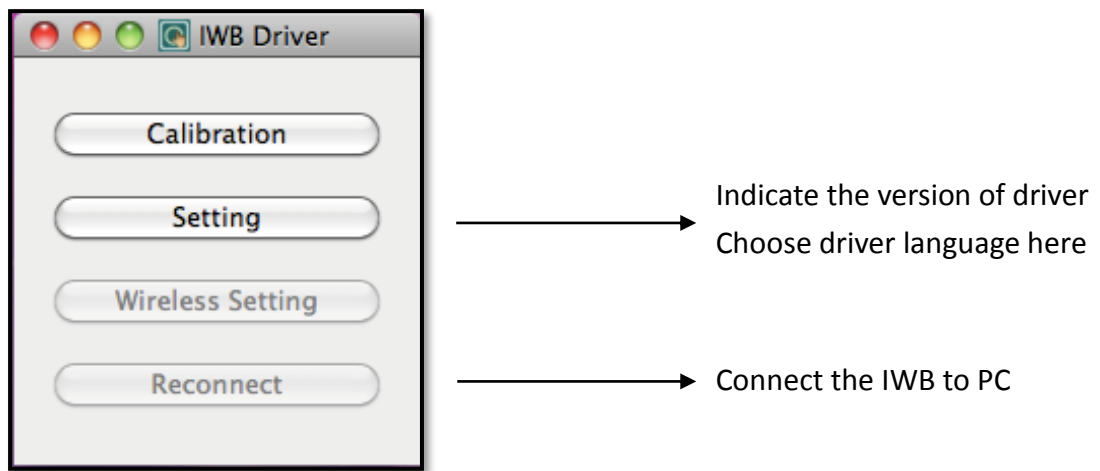
Step 2: Click Wireless Setting, to search the Whiteboard Device

Step 3: Select & pair the board

Step 4: Click Reconnect



MAC Driver Introduction



Important:

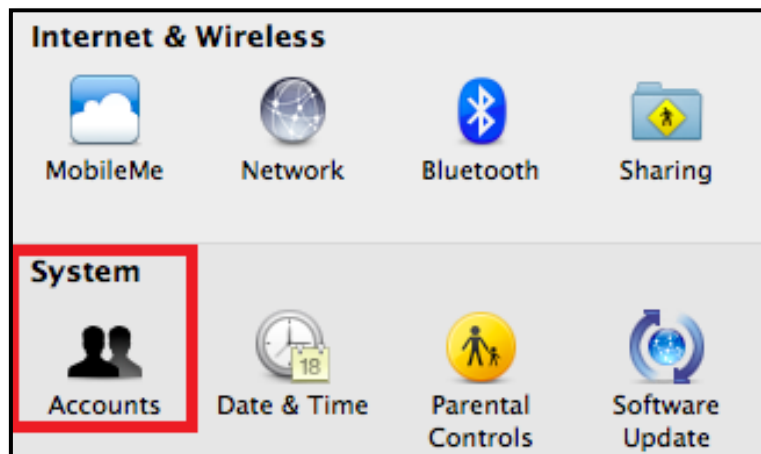
1. Please keep Driver running when you are using the board
2. You can choose Language in setting first
3. If you move the position of the board or projector, you will need to calibrate again

Setting up auto run application in Mac OS

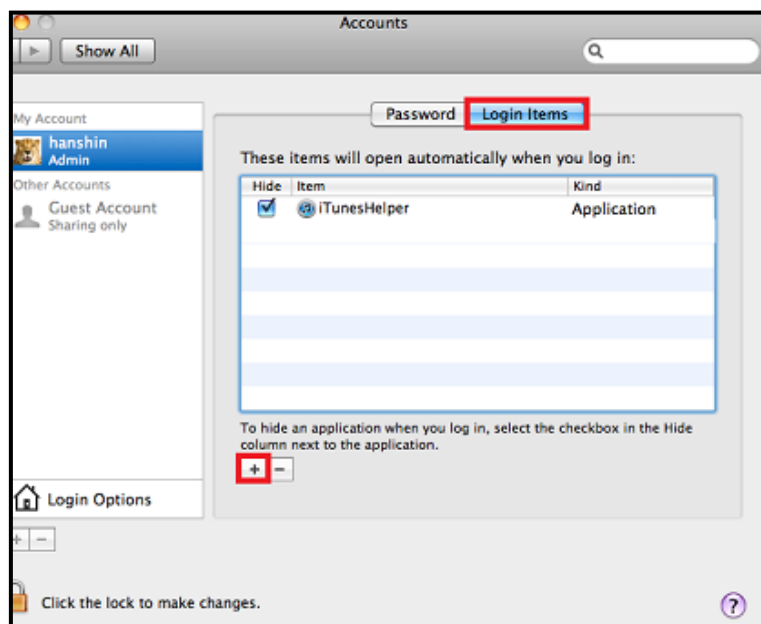
Step 1: After the driver is installed successfully, choose “**System Preferences**” from the desktop icon.



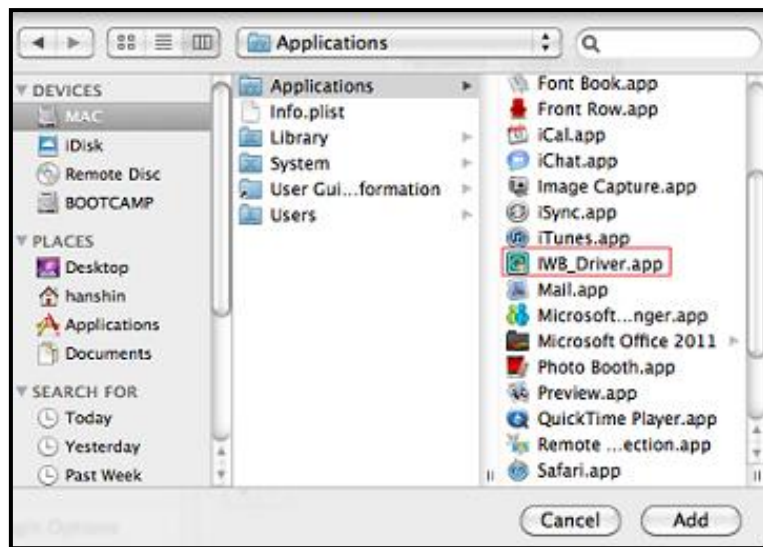
Step 2: Click “**Accounts**” in System settings.



Step 3: Click “**Login Items**” and then “**+**” to add applications.



Step 4: Choose the application and click the “Add”.



Step 5: The applications on the list will run automatically when you log in the computer.

Procedure of using Mac Driver

1. Procedure of using the driver and enote software must be following the steps below, or else some problem may occur to the touch functions:
 - 1.1 Connect the iwb to the MAC USB slot
 - 1.2 Run the driver software using mouse, make sure the driver shows whiteboard connected.
During using:
 - A. Driver needs to be kept running
 - B. Do not unplug the iwb.(if iwb is unplugged, reconnect the iwb and click on reconnect in the driver using mouse)
 - 1.3 calibrate the iwb, if resolution is changed, then calibration is needed to be redone.
2. If the software stopped working during using, it is needed to unplug the iwb, then reboot the Mac system, and start following the steps from step 1.